

Spannfinger / Chuck lever / Gatillo / Martelletto

**Für konventionelle
Drehautomaten,
Langdreher und
CNC Maschinen**

**For conventional
automatic lathes,
long turners and
CNC machines**

Teile passend für Variomatic/ Rundtaktmaschine

Seite 18

Parts suitable for Variomatic/ Round-stroke machine

Page 18



Art.-Nr. 1030030

passend für/suitable for **ACME/GRIDLEY**

Bezeichnung Designation	Ident - Nr. Ident - No.	Art.-Nr. Art.-No.
1 1/4 "		1030010
MAG 16/1		1030020
MAG 16/2		1030030
MAR 25		1030040
HSC 6	02977-1	1030050



Art.-Nr. 1007050

passend für/suitable for **BECHET**

Bezeichnung Designation	Ident - Nr. Ident - No.	Art.-Nr. Art.-No.
RM / MAC 12-15	1268 Gc 77 a	1007010
RM / MAC 19-20	1968 G 807 c	1007020
RM / MAC 25	2564 G 21 b	1007030
RM 3268	3268 Ge 23 c	1007050



Art.-Nr. 1008040

passend für/suitable for **BECHLER**

Bezeichnung Designation	Ident - Nr. Ident - No.	Art.-Nr. Art.-No.
AS 7-10, AR 10	3,0 mm	1008010
Stift/pin 3 h 6 x 32		1008020
AS 7-10, AR10,	4,0 mm	1008040
Stift/pin 4 h 6 x 32		1008050
BR 20, BR 12	441 335	1008030



Art.-Nr. 1010070

passend für/suitable for **Boley**

Bezeichnung	Ident - Nr.	Art.-Nr.
BC 42x2 Hauptspindel		1010070



Art.-Nr. 1031060

passend für/suitable for **BROWN & SHARPE**

Bezeichnung Designation	Ident - Nr. Ident - No.	Art.-Nr. Art.-No.
01-2CVA8 3A57	42-15198	1031010
OG	42-10176	1031020
2#	42-12397	1031030
CVA A 12-16	51-80245	1031050
CVA A 16-20	51-87550	1031060



Art.-Nr. 1010020



Art.-Nr. 1010050



Art.-Nr. 1010080

passend für/suitable for **CITIZEN**

Bezeichnung Designation	Suit. Pin	Ident - Nr./Abm. Ident - No./Dia.	Art.-Nr. Art.-No.
CNC-Machine:			
A 32, A20		632-967 A 32 C 110	1010160
A 20		A 220 C 1121	1010200
B 12 B-Spindel	1	B 12 U 50C416	1010060
B 12 B-Spindel	5	B 312 U53 – 413	1010140
B 12, BS 20, K 12, K 16, M16 ^{HS*}	2	F 412 SC 117 B 20 C 119	1010050
BS 20, B 16 E, K 16 B-Spindel		B 20 U 50 C 111	1010120
C 16 Haupt-/B-Spindel	2	B 20 C 119 631-319	1010050
F 12	2	F 412 SC 117 B 20 C 119	1010050
G 16			1010130
L 16 E, L 20 Hauptsp. (L=73mm)	3		1010020
L 16/20 B-Spindel., L10 L 16/N Hauptsp. (L=52,2mm)	4	L 216 U41B 122	1010080
L 20 Haupt-/B-Sp., L 5 20, L 12	2	F 412 SC 117 B 20 C 119	1010050
M 20/32, L 25, C 32, A 20, L 32	3	632-310 L 216 C 114	1010070

*HS=Hauptspindel/Mainspindle
B-Spindel/Subspindle

Pins suitable for **CITIZEN**



Art.-Nr. 1010100

Bezeichnung Designation	Ident - Nr. Ident - No.	Art.-Nr. Art.-No.
Stift/pin 1	4 m 6 x 22	1010100
Stift/pin 2	6 m 6 x 40	1010090
Stift/pin 3	8 m 6 x 45	1010040
Stift/pin 4	4 m 5 x 30	1010030
Stift/pin 5	4 h 6 x 30	1010150
Stift/pin 6 (A20 alte Version/old version)	6 x 32	1010170

passend für/suitable for **DOOSAN PUMA**

Bezeichnung Designation	Ident - Nr. Ident - No.	Art.-Nr. Art.-No.
32 STG		1026510

passend für/suitable for **EUBAMA**

Bezeichnung Designation	Ident - Nr. Ident - No.	Art.-Nr. Art.-No.
10-15 * S 8		1011010



Art.-Nr. 1011010

passend für/suitable for **FEINLER**

Bezeichnung Designation	Ident - Nr. Ident - No.	Art.-Nr. Art.-No.
FA 10-15, S 8		1011010
Stift/pin 6 h 6 x 36		1002040



Art.-Nr. 1012020

passend für/suitable for **GAUTHIER**

Bezeichnung Designation	Ident - Nr. Ident - No.	Art.-Nr. Art.-No.
GM 100/127 hole 4 mm	05.03.0111	1012010
Stift/pin 4 x 24 GM 100/127		1012030
GM 127 hole 5 mm	05.03.0112	1012020
Stift/pin 5 x 24 GM 127		1012040
GM 160	75.03.7075	1012070
GM 20	09.03.1041	1012080
GM 25	09.03.2082	1012060
GM 75 l-h	05.10.0025	1012050



Art.-Nr. 1006010

passend für/suitable for **GILDEMEISTER**

Bezeichnung Designation	Ident - Nr. Ident - No.	Art.-Nr. Art.-No.
AA 48	343-10-213/53	1006110
AA 67	355-10-2130/055	1006150
AS 100	347-10-2130/000	1006210
AS 12	10.01.253	1006000
AS 16-20	08.01.303	1006010
AS 20 Special	200.96.301	1006320
AS 25	341-10-2130/001	1006030
AS 32	342-10-2130/000	1006040
AS 32	342-10-2130/001	1006050
AS 32	342-10-2130/002	1006060
AS 32	342-10-2130/003	1006070
AS 48	343-10-2130/001	1006080
AS 48	343-10-2130/002	1006090
AS 48	343-10-2130/003	1006100
AS 67	355-10-2130/001	1006120
AS 67	355-10-2130/002	1006130
AS 67	355-10-2130/051	1006140
AS 82	327-10-2130/051	1006300
AS/AV 82	327-10-2130/002	1006170
GM 16 AC Mainspindle	53.01.334-1189	1006250
GM 16-6 Mainspindle	53.01.387-03	1006280
GM 35/32	35.01.130	1006310
GM 42	40.01.113	1006420
GS/GM 20	31.01.108	1006260
GS 25/30	22.10.125	1006180
GS 28-25/6	705-10-0017/001	1006190
GS 35-50/6	703-10-0017/000	1006200
GS 50-6	709-10-0017/000	1006600



Art.-Nr. 1006040



Art.-Nr. 1006260

passend für/suitable for **GILDEMEISTER-CNC**



Art.-Nr. 1006330



Art.-Nr. 1006370



Art.-Nr. 1006380



Art.-Nr. 1006510



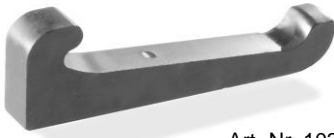
Art.-Nr. 1027010

Bezeichnung Designation	Ident - Nr. Ident - No.	Art.-Nr. Art.-No.
CNC-Machine:		
GD 12-16, GD 20 Subspindle (Gegensp.)	55.10.107	1006290
GD 20 Mainspindle (Hauptspindel)	55.10.227	1006460
GD 32	56.10.129	1006450
GLD 12-16	55.10.107	1006290
GLD 20-25-32	54.10.119	1006240
GLD- Pin to GLD 20-25-32 (7x42,5)	54.10.117	1006350
GM 35/8, GMC 35	42.01.293	1006400
GMC 20 S	51.01.284	1006410
GMC 42	57.01.299	1006540
MSL	60.10.92	1006530
MSL 42/60	94.10.123	1006530
MSL 60/7	56.10.322	1006330
Speed 12 Mainspindle (Hauptspindel)	20.10.136	1006370
Speed 20 Main-/Subspindle (Haupt-/Gegensp.)	21.10.141	1006360
Speed 20-8 Subspindle (Gegenspindel)	20.10.136	1006370
Speed 20-8 Mainspindle (Hauptspindel)	21.10.141	1006360
Sprint 20 Main-/Subspindel (20/5, 20/8)	21.10.141	1006360
Sprint 20 Subspindle (Gegenspindel)	20.10.136	1006370
Speed/Sprint Pin/Zylinderstift (to Art.No. 1006360/1006370/1006330)	Dim. 7x42,5 both sides interior thread	1006580
Sprint 32 linear	54.10.254	1006240
Sprint 32 linear	56.10.322	1006330
Sprint 32 linear Mainspindle (Hauptspindel)	26.10.196	1006510
Sprint 32/42 linear	26.10.147	1006550
Sprint 42 linear Subspindle (Gegenspindel)	56.10.322	1006330
Sprint 42 linear Mainspindle (Hauptspindel)	26.10.123	1006380
Sprint 42 linear Mainspindle (Hauptspindel)	26.10.196	1006510
Sprint 42 Pin/Zylinderstift (to Art.No. 1006380/1006510)	Abm. 10h 9x 50mm 26.10.129	1006590
Sprint 50 linear	94.10.123	1006530

passend für/suitable for **GOODWAY**

Bezeichnung Designation	Ident - Nr. Ident - No.	Art.-Nr. Art.-No.
SW 32 Gegenspindel		1027010

passend für/suitable for **HANWHA**



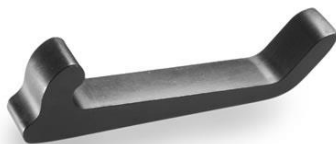
Art.-Nr. 1033810



Art.-Nr. 1033900



Art.-Nr. 1033800



Art.-Nr. 1013010

Bezeichnung Designation	Ident - Nr. Ident - No.	Art.-Nr. Art.-No.
HANEX 17 ML 12 Subspindel/Gegenspindel	NPS 7000-019 3184-S050-1091	1033820
HANDEX 17 XD 20 SL20S SL 16 ML 20 Hauptspindel/Mainspindle	BSS 3000-021 3170-M210-1060	1033850
HANEX 25 ML 20/26 XD 20, 32 HPD SL 26S/H SL 32S SL 20/26/32/35HP 2 SL 32 HP 2 Subspindel/Gegenspindel	SSS 7000-012 3192-M011-1080	1033800
HANEX 25 ML26 SL26S/H SL32S SL20/26/32/35HP 2 SL 32 HP 2 Hauptspindel/Mainspindle 32HPD Hauptspindel/Mainspindle	SSS 3000-015 3173-M010-1140	1033870
SL 12 Hauptspindel/Mainspindle XD 12 Hauptspindel/Mainspindle	3184-M010-1130 NPM 0100 S 113	1033810
SL 12 Se/S/H Gegenspindel/Subspindle SL 16 Gegenspindel/Subspindle	BSS 7000 004 3224-S020-2200	1033860
STL 35H, 32/H Main-/Subspindle	SST 11000-022	1033830
STL 38 H, XD 38 II Subspindle	ST 11000-819	1033920
X 3 PJT XD20V Mainspindle	PA 12000-011	1033910
XD 20V Gegenspindel/Subspindle	PC 16000-105	1033940
Stift passend für XD 20V Gegensp/Sub		1126040
XD 20V Hauptspindel/Mainspindle XD 20/26II Main-/Subspindle XE 20/26 Main-/Subspindle	PD 11000-009	1033930
XD 26 H Gegenspindel/Subspindle	DA 15000-005	1033880
XD 26 H Hauptspindel/Mainspindle	SM 02026-001	1033890
XD 38 II, XE 35, XD 32 H Main-/Subspindle	CA 11000-013A	1033900
XP 12; ML12 – Hauptsp./Mainspindle	XOS3000-015	1033840
XD 12 IIH, XD 16	MC 11200-105	1033950
XD 7 Main-/Subspindle	NA 11200-005	1033960
Stift passend für XD 7 (D4x19mm)	NA 12000-011	1033970
XE 35	XE 15500-014A	1033990

passend für/suitable for **HESTIKA**

Bezeichnung Designation	Ident - Nr. Ident - No.	Art.-Nr. Art.-No.
HS 1, HS 2, HR 16	1001- 2. 110	1013010
RE 26, RE 30, HR 32/44		1013020

Chuck lever / Gatillo



Art.-Nr. 1033100

passend für/suitable for **HOFMANN**

Bezeichnung Designation	Ident - Nr. Ident - No.	Art.-Nr. Art.-No.
HA 15 Kleim & Ungerer		1033100



Art.-Nr. 1003040

passend für/suitable for **INDEX**

Bezeichnung Designation	Ident - Nr. Ident - No.	Art.-Nr. Art.-No.
DG, ON, OR	AA1371	1003010
A 12, ER 16	A33280	1003020
C19, A 25-18, ER 25, KR 30, GS 30	A43280	1003030
C 29	C29591	1003040
B 30-24	A53283	1003050
B 36-42-52-60	A73281	1003060



Art.-Nr. 1014020

passend für/suitable for **MANURHIN**

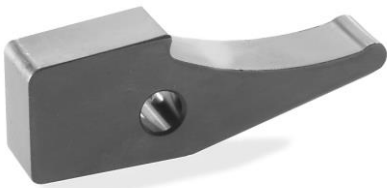
Bezeichnung Designation	Ident - Nr. Ident - No.	Art.-Nr. Art.-No.
PF 16-22-25-32 TR	4882	1014010
PF 25 Achse/axis	7 x 48 mm	1014060
PF 42-36	1770	1014020
PF 60-80-52	6298	1014030
Combimat 42-60-80		1014040
Spannmuffe Combimat Clamping sleeve Combimat	330 767	1014070



Art.-Nr. 1015050

passend für/suitable for **MUPEM**

Bezeichnung Designation	Ident - Nr. Ident - No.	Art.-Nr. Art.-No.
TH 42-60	TH-CA-014	1001070
MH 32-42-16		1004040
22 CA-045		1015050
TR 16-26	15-CA-060	1001080
TR 25		1001020
TH 30		1001050
Kurvenbolzen/Cam follower TH 42	TH-CR-019	2025050
Kurvenbolzen/Cam follower TR-26	15-CR-019	2025010



Similar to this type

passend für/suitable for **NEXTURN**

Bezeichnung Designation	Ident - Nr. Ident - No	Art.-Nr. Art.-No.
SA 32	2132-M010-2100	1036060
SA 32	2132-M010-2101	1036060
SA 12	2012-M010-19A2	1036070



Art.-Nr. 1020050

passend für/suitable for **NOMURA**

Bezeichnung Designation	Ident - Nr. Ident - No	Art.-Nr. Art.-No.
NMR 2030	NN-32YB3	1020050
NMR 1240		1020060
NMR 4308		1020070



Art.-Nr. 1039060

passend für/suitable for **ORTLINGHAUS**

Ident - Nr. Ident - No		Art.-Nr. Art.-No.
I-100-046-23-000-000		1039010
I-300-046-15-000-000		1039020
I-100-046-15-000		1039030
I-100-046-25-000-000		1039120
I-100-046-31-000-000		1039050
I-100-046-39-000		1039070
I-110-046-15-152-000		1039090
I-100-113-15-000-000	Bolzen/bolt suitable to Art.-No. 103902 + 103903	1039100
I-100-113-23-000-000	Bolzen/bolt suitable to Art.-No. 103902 + 103903	1039040



Art.-Nr. 1016020

passend für/suitable for **PETERMANN**

Bezeichnung Designation	Bohrung Ø Hole Ø	Ident - Nr. Ident - No.	Art.-Nr. Art.-No.
P 4	3 mm	098105	1016010
P 7	4 mm	098106	1016020
P 7 R	4 mm	098108	1016030
P 7 R	5 mm	098108	1016060
P 3	3 mm	098104	1016040
P 16	5 mm	098107	1016050



Art.-Nr. 1025010

passend für/suitable for **PITTLER-DREHMA**

Bezeichnung Designation	Ident - Nr. Ident - No.	Art.-Nr. Art.-No.
PRC 32		1025010
PRC 36		1025020
PRC 72-100		1025030
PRC 50 4 / 6 / 8		1025060
DAR 63 / 71		1025050
DAR 46		1025100
PRC	10.222.0770.2	1025110
DAM 32/6/8		1025130
PRC 25/8, 36/6	162225891	1025140



Art.-Nr. 1024010

passend für/suitable for **PRÄWEMA**

Bezeichnung Designation	Ident - Nr. Ident - No.	Art.-Nr. Art.-No.
Revolver	RD 33	1024010
PN 125		1024020



Art.-Nr. 1034050

passend für/suitable for **SCHAUBLIN**

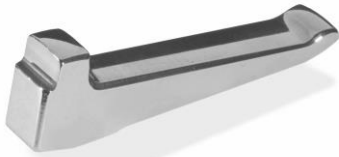
Bezeichnung Designation	Abmessung Dimensions	Art.-Nr. Art.-No.
102/120 HP (B14/11,8/L62,2)	0102-34012-000	1034050
120-316 (B14/11,8/L57,5)	0119-00316-000	1034060
102 (B11,95/L66/Ø7)	0-53-0190	1034080



Art.-Nr. 1017190



Art.-Nr. 1017260



Art.-Nr. 1017270

passend für/suitable for **SCHÜTTE**

Bezeichnung Designation	Ident - Nr. Ident - No.	Art.-Nr. Art.-No.
SB 16 with hole	SB 16 890 b	1017010
SB 16	SB 16 890 d	1017020
SB 22	V 22 R 890	1017030
SB 30, SB 35	V 35 R 890	1017040
SB 35	SB 35 890	1017050
SB 42	SB 42 D 890 A	1017060
AD 40	AD 40 D 390 A	1017070
SD 25-32	VD 32 D 390A	1017080
SD 50-63-80	VD 63 D 390 A	1017090
SD 89	VD 63 D 390 A/I	1017100
SE 16-18	SE 16 D 390 B	1017110
SE 25-26	SE 25 D 390 A	1017120
SF 13	C 3220-B-00 SZ	1017130
SF 20	C 3220-B-11 SZ	1017140
SF 20 DNT	C 3220-D-11 SZ	1017380
SF 26	B 3220-C-11 SL	1017150
SF 26 A	C 3220-B-11 SL	1017150
SF/AF 26-32	C 3220-A-23 Z	1017160
SF 26-32	C 3220-B-23 Z	1017170
SF/AF 26-32 N	C 3220-C-23 Z	1017180
SF 40-42-51	C 3220-A-44 SZ	1017190
SF/AF 42, SF 51	C 3220-B-45 Z	1017200
SF/AF 67-81	C 3220-B-66 Z	1017210
SF 81/ SF 67	C 3220-A-67 SZ	1017220
SF 100	C 3220-77-SL	1017230
SF 26 L, SF 26 S	C 3220-C-11 SL	1017250
SG 18 / AG 20	B 3220-A-G 1SZ	1017260
SG 18 / AG 20 mit Absatz/with shoulder	B 3220-A-G 1SZ	1017270
CNC-Machine:		
A 36 PC (NC)	C 3220-C-23 Z	1017410
SE 25 Greifer/Gripper	D26 AEI S 14	1017440
Chuck levers/Spannfinger für Schütte Kupplung/Clutch – next page/nächste Seite		



Art.-Nr. 1017290

passend für **SCHÜTTE-KUPPLUNG**
suitable for **SCHÜTTE-CLUTCH**

Bezeichnung Designation	Ident - Nr. Ident - No.	Art.-Nr. Art.-No.
SE 25	SE 25-C-2538 A	1017280
SE 16	SE 16-C-2538 A	1017290
SFH 160	C 3220-C-44 SF	1017240
SFH 160	C 3320-44-SF	1017430
SF 20 DNT	D 3320-A 11F	1017400
AD 40	C 3320-A-55 Z	1017420



Art.-Nr. 1018030

passend für/suitable for **SKODA / MAS**

Bezeichnung Designation	Ident - Nr. Ident - No.	Art.-Nr. Art.-No.
A 12, A 20 B MAS	321 1512E4L28	1018010
A 40 MAS	321 1508	1018020
A 32-40-50 CA MAS 42	338 4022 E1	1018030
Pin suitable to A12/A20B	Dim. D7x 32	9992030



Art.-Nr. 1034020

passend für/suitable for **SPINNER**

Bezeichnung Designation	Ident - Nr. Ident - No.	Art.-Nr. Art.-No.
SPL 023	LA 158 SU	1034020

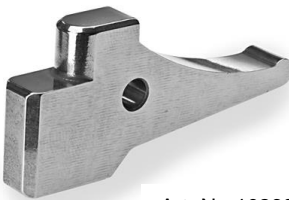
passend für/suitable for **STAR**



Art.-Nr. 1026510



Art.-Nr. 1026070



Art.-Nr. 1026090

Weitere Typen und passende Stifte
Siehe nächste Seite!
Further types and suitable pins
see next page!

Bezeichnung Designation	Spindel Spindle	Ident - Nr. Ident - No.	Suit. Pin	Art.-Nr. Art.-No.	Preis/Stück Price/piece
CNC-Machine:					
ECAS-20	Main-/Subspindle	540-39-600/620	9	1026510	
ECAS-32T	Mainspindle	580-320-70	4	1026540	
ECAS-32T A48	Subspindle	580-840-70	4	1026550	
JNC 16	Mainspindle	025-32-060/080	3	1026010	
JNC 25 / 32		052-32-070/090	5	1026020	
KJR 16	Mainspindle	250-32-090/100	3	1026070/90	
KJR 16	Subspindle	252-32-070/090	2	1026160	
KJR 25	Mainspindle	260-32-070/090	4	1026220	
KJR 25	Subspindle	262-32-070/090	4	1026220	
KJR 25 II	Mainspindle	360-32-070/090	4	1026220	
KJR 25 II	Subspindle	362-32-080/100	4	1026220	
KNC 16/20	Subspindle	222-32-230/250	6	1026060	
KNC 16/20 with phase	Mainspindle	220-32-070/090	4	1026150	
KNC 25/32	Mainspindle	200-32-070/090	5	1026020	
KNC 25/32	Subspindle	202-32-230/250	6	1026080	
KNC 25/32 II	Mainspindle	340-32-070/090	5	1026020	
KNC 25/32 II	Subspindle	342-32-230/250	6	1026080	
KNC 32 II	Subspindle	342-32-231/250	6	1026200	
RNC 16	Mainspindle	210-32-060/080	3	1026070/90	
RNC 16	Subspindle	270-82-080/100	1	1026100	
RNC 16	From year 2014	OEO-32-060	3	1026570	
RNC SR 32	Subspindle	342-32-231/250	6	1026200	
SA 16/12	Mainspindle	460-32-100/120	3	1026070/90	
SA 16/12	Subspindle	460-82-080/100	2	1026240	
SA 16 R	Mainspindle	470-32-100	9	1026510	
SA 16 R	Subspindle	470-82-080	2	1026240	
SB 12	Mainspindle	110-32-120	3	1026570	
SB 12 R/RG	Main-/Subspindle	OM0-83-070 110-32-820	10	1026580	
SB 16	Subspindle	480-82-070	2	1026240	
SB 16	Mainspindle	460-32-100/120	3	1026070/90	
SB 20 Typ E	Subspindle		10	1026580	
SB 20 RE	Main-/Subspindle	110-32-820	10	1026580	
SB 20 R Typ G	Mainspindle	110-32-120	3	1026570	
SB 20 R Typ G	Subspindle	110-83-070	10	1026580	
SE / SH 16	Mainspindle	400-32-100/120	3	1026070/90	
SH 7		410-32-100/120	8	1026190	
SI 12		XK72.9.150	10	1026250	
SL 7 / SL 10	Mainspindle	PO-38200	10	1026580	
SL 7 / SL 10	Subspindle	PO-37050	10	1026250	
SNC 15		196-32-060/080	3	1026010	
SNC 25		091-32-060/080	5	1026110	

passend für/suitable for **STAR**



Art.-Nr. 1026210



Art.-Nr. 1026530

Bezeichnung Designation	Spindel Spindle	Ident - Nr. Ident - No.	Suit. Pin	Art.-Nr. Art.-No.	Preis/Stück Price/piece
CNC-Machine:					
SR 10 J	Mainspindle	460-82-080/100 690-32-090	2	1026240	
SR 10 J	Subspindel	690-83-070/090	10	1026250	
SR 16	Mainspindle	310-32-090/100	3	1026070/90	
SR 16	Subspindle	312-32-070/090	2	1026130	
SR 16 R		540-39-100	9	1026510	
SR 20 J	Subspindle	0E0-83-050	6	1026500	
SR 20 J	Main-/Subspindle	460-32-100/120	3	1026070/90	
SR 20 J	Mainspindle	0A0/0G0/0H0-32-060 480-32-080	3	1026570	
SR 20 / SR 20CE	Subspindle	322-32-070/090	6	1026060	
SR 20 R II/III/JN	Subspindle	540-84-050/070	6	1026500	
SR 20 R / SW 20	Mainspindle	540-39-600/620	9	1026510	
SR 20 RII + III	Subspindle	660-84-050	6	1026500	
SR 20 RII + III + IV	Mainspindle	660-39-600 680-32-130	9	1026510	
SR 20/32		330-32-090/100	4	1026220	
SR 32	Subspindle	332-32-090/110	6	1026200	
SR 32 J	Main-/Subspindle	670-320-90/110	6	1026530	
SST 16		300-32-090/100	3	1026070/90	
SR 32 J II	Main-/Subspindle	P0-01000	12	1026260	
SST 16	Mainspindle	210-32-060/080	3	1026070/90	
SST 16	Subspindle	302-32-070/090	2	1026120	
SST 16	Mainsp. from year 2014	OEO-32-060	3	1026570	
ST/SR/SX38 SV38R/SW38	Mains-/Subspindle	0B0-32-130/100	11	1026560	
SV 12	Mainspindle	450-32-100	9	1026510	
SV 12	Subspindle	452-32-100/120	9	1026520	
SV 20	Main-/Subspindle	420-32-060/080	4	1026210	
SV 20 R	Subspindle	1B0-83-130	9	1026510	
SV 32	Mainspindle I	440-32-090	4	1026220	
SV 32	Mainspindle II	430-32-090	4	1026220	
SV 32 J	Subspindle	442-32-090/110	6	1026230	
SW 7/R	Mainspindle	380-32-130/150	8	1026190	
SW 7/R	Subspindle	382-32-110/130	8	1026190	
SW 12 RII	Subspindle	1H0-83-120	10	1026590	
SW 20	Mainspindle	540-39-600/620	9	1026510	
VNC 20 <small>without phase</small>	Mainspindle	750-32-060/080	4	1026150	
VNC 20	Subspindle	749-21-180/190	2	1026160	
VNC 32		780-32-060/080	5	1026020	

Hauptspindel = Mainspindle B-Spindel = Subspindle

Passende Stifte für Ihre Star Spannfinger, siehe nächste Seite
Suitable pins for your Star chuck levers, next page

Stifte passend für/Pins suitable for **STAR - CHUCK LEVER**



Art.-Nr. 1126040
Art.-Nr. 1126060

Bezeichnung Designation	Abmess. Size	Art.-Nr. Art.-No.
Stift/pin 1	5 x 28,5	1126010
Stift/pin 2	6 x 31	1126020
Stift/pin 3	6 x 46	1126030
Stift/pin 4	8 x 48	1126040
Stift/pin 5	8 x 58	1126050
Stift/pin 6 (mit Absatz/with shoulder)	8 x 36	1126060
Stift/pin 8	6 x 34	1126080
Stift/pin 9	8 x 50	1126090
Stift/pin 10	6 h7 x 30,5	1126100
Stift/pin 11	12h7 x 46,5	1126110
Stift/pin 12 (mit Absatz/with shoulder)	10 h6 x 44	1126120

Jeweils mit Sicherungsring / each with circlip

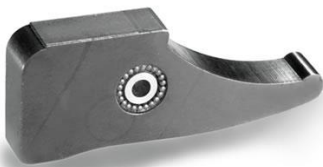
passend für/suitable for **STEINHÄUSER**



Art.-Nr. 1004040

Bezeichnung Designation	Ident - Nr. Ident - No.	Art.-Nr. Art.-No.
StF 18-25 (with pin 2,5x6)	A 120	1004010
StF 18-25 (with pin 5x18)	A 120	1004020
StF 36, St 22	B 118	1004030
KS 20-25-32-42-50	SK0342.0340	1004040
D/E 12,5-16-20-25	3152	1003010
D/E 12,5-16-20-25	3152-1	1004060
D/E 12,5-16-20-25	3152-2	1004070
D 36-42-52-60	B 5855	1004090
Stift/pin 8 x 38 suitable to 100406		1004080
Stift/pin 8 x 50		1004100

passend für/suitable for **STROHM**



Art.-Nr. 1002030

Bezeichnung Designation	Ident - Nr. Ident - No.	Art.-Nr. Art.-No.
M45	680 297	1002010
M 75-105, 125 AS	661 434	1002020
M 125 NAR	661 435	1002030
Stift/pin 6h6 x 36 suitable to M75-105, M125NAR	670 439	1002040
M 205-255 neu/new	661 557	1002050
Stift/pin 8 x 32 suitable to M205-255new	670 786	1002080
M 205-255 alt/old	680 733	1002060
Stift/pin 9 x 75 suitable to M205-255old	680 737	1002090
SN 25 Numura		1002070

Chuck lever / Gatillo



Art.-Nr. 1038000

passend für/suitable for **STROMAG**

Bezeichnung Designation	Ident - Nr. Ident - No.	Art.-Nr. Art.-No.	
735-21-0000-000 735-00031	56 x 8 Ø 5	1038000	
735-00107 735-000 53	76 x 10 Ø 6	1038010	
735-24-000	62 x 8 Ø 5	1038020	
Jeweils mit Zylinderstift/each with pin			



Art.-Nr. 1019010

passend für/suitable for **TAKAMAZ / TAKAMATSU**

Bezeichnung Designation	Ident - Nr. Ident - No.	Art.-Nr. Art.-No.	
Attack	A-LD 16	1019010	
SX-07		1036010	



Art.-Nr. 1020020

passend für/suitable for **TAREX**

Bezeichnung Designation	Ident - Nr. Ident - No.	Art.-Nr. Art.-No.	
32-42, L 52	108 280	1003050	
M 42, M 52	150 356	1020020	
42 Minitar	123 296	1020020	



Art.-Nr. 1022010

passend für/suitable for **TAVANNES**

Bezeichnung Designation	Ident - Nr. Ident - No.	Art.-Nr. Art.-No.	
SSA 60	148 205	1022010	
STA 40	110 904	1022020	
ST 50	147 597	1022030	
Wisard	148 205	1022040	

passend für/suitable for **TORNOS**



Art.-Nr. 1005010



Art.-Nr. 1005160



Art.-Nr. 1005090



Art.-Nr. 1005290

Bezeichnung Designation	Ident - Nr. Ident - No.	Art.-Nr. Art.-No.
AS 14, SAS 16 Mainspindle	12 149	1005010
Pin suitable for AS/SAS Mainsp.	004770 (37xø6)	1005600
AS 14, SAS 16 Gripper equipment	24 17	1005020
G 85, MR 28-32	098 099	1005240
M 4	MF 3549	1005040
M 4	MF 433	1005050
M 4	MF 7817	1005060
M 7	MD 265	1005070
M 7	MD 15355	1005110
M 7 mit Stopp/with stop	MA 4911	1005210
M 7 verstärkt/strengthened	MD 9705	1005080
M 10	MA 6469	1005120
M 15	B 451	1005130
M 20	J 51	1005140
M 25	C 157	1005150
MS 7	MD 14103	1005090
MS 7 Stopp/stop	MD 15825	1005100
NA 12, NA 153	098 098	1005230
R 7	RD 4039	1005250
R 10	5 RA 87	1005160
R 10 neu/new	5 RA 87-06	1005170
R 16	5 RB 5031	1005180
RR 20	RB 5105	1005190
RR 20-01	RB 5105-01	1005220
TV, T4	TV 45	1005030
CNC-Machine:		
ENC 164	810 965	1005200
BS 20	045 397	1005290
BS 20 8 SPR	096 900	1005300
MTH Fräseinheit/milling unit	4/MT 359	1005500
Delta 12/14, 20/5, 12/4 Subspindle Gamma 20/5 Subspindle	B288-089 D062-218 100 570 1000 871 1000 441	1033280
Delta 20/5, 12/4, 15/5 Gamma 20/6, 20/5	B272-016 B289-078	1033800

Chuck lever / Gatillo

passend für/suitable for **TRAUB**



Art.-Nr. 1001030



Art.-Nr. 1001120

Bezeichnung Designation	Breite Width	Ident - Nr. Ident - No.	Art.-Nr. Art.-No.
A 15-20-25	10 mm	632 192	1001020
A 25, TC 15	12 mm	616 112	1001030
A 26-36	14 mm	632 202	1001040
A 42-60	14 mm	630 950	1001050
T 30-42-60	16 mm	632 521	1001060
TB 42-60-80, TK, TF	18 mm	614 194	1001070
TB 42-60 with roll	18 mm	614 194	1001200
TD 16 -26-36	12 mm	691 325	1001080
TG (4 pieces/set)	12 mm	675 609	1001240
AH 36		629 045	1001100
CNC-Machine:			
TNL 16 (2 pieces/set)		773 075	1001120
TNS 26 (3 pieces/set)		738 508	1001120
TNC 30		738 405	1001120



Art.-Nr. 1033870



Art.-Nr. 1033280



Art.-Nr. 1033800



Art.-Nr. 1033980



Art.-Nr. 1003040

passend für/suitable for **TSUGAMI**

Bezeichnung Designation	Ident - Nr. Ident - No.	Art.-Nr. Art.-No.	
S 16 S 20 B-Spindle	3192-S030-1060	1033260	
NF 20/17 B-Spindle	3171-M011-1140	1033800	
HS 20 Mainspindle HS 207 Main-/B-Spindle BO 205E Main-/B-Spindle BO 126-III S 206 B-Spindle BS12/20, B012/126/20/205/206	3262-M010-1301 M744-029C	1033280	
BO 205-206-325-326 BS 12, BO 12 Mainspindle BS 12-18, BO 12-18 B-Spindle BS 20 Mainspindle BS 20-26-32 B-Spindle HS 20/26-32 B-Spindle S 16/20 Mainspindle BN 20 Mainspindle HS 207 Mainspindle S 206 Mainspindle	3192-M011-1080	1033800	
B0 12 Mainspindle	3184-M010-1130	1033810	
NP 11 B-Spindle NP 17 B-Spindle	3184-S050-1091	1033820	
NP 17 Mainspindle BS 18 Mainspindle B0 18 Mainspindle	3170-M210-1060	1033850	
BO/BS/BW/BN 12 (B=8mm)	3224-S020-2200	1033860	
BS 32III/V, BS 26III/V BO 326 Mainspindle B0325/326/266/BS26/HS26/HS32	3215-M050-1400 mit Freifräsung	1033980	
BS 32III/V, BS 26III/V BO 326 Mainspindle B0325/326/266/BS26/HS26/HS32	3215-M050-1400 ohne Freifräsung	1033870	
T 25 SB BO 385 LE	3137-0111-1190 NSA 311-007N	1033290	
NP 20-32 Mainspindle BS 26-32 Mainspindle HS 26-32-327 Mainspindle	3173-M010-1140	1033870	
BH 38E Main-/B-Spindle BU 38 Main-/B-Spindle TMU 1E Mainspindle BO 385E Main-/B-Spindle	3233-S020-0500		

Weitere Typen auf Anfrage / further types on request

passend für/suitable for **UNAMUNO**

Bezeichnung Designation	Ident - Nr. Ident - No.	Art.-Nr. Art.-No.	
TA 15-16		1011010	
TA 25-26		1003040	
TA 42		1001070	

Chuck lever / Gatillo



passend für/suitable for **UNIMAT**

Bezeichnung Designation	Ident - Nr. Ident - No.	Art.-Nr. Art.-No.	
Drehfräsa		1028010	



Art.-Nr. 1001050

passend für/suitable for **WEILER**

Bezeichnung Designation	Ident - Nr. Ident - No.	Art.-Nr. Art.-No.	
Turnomat	AR 36	1001050	



Art.-Nr. 1032030

passend für/suitable for **WICKMAN**

Bezeichnung Designation	Ident - Nr. Ident - No.	Art.-Nr. Art.-No.	
3 1/4 "	501 V 138 HA/38	1032010	
2 1/4 ", 1 3/4", 1 3/8 "	301 V 104 0	1032020	
2 1/4"	3539 D	1032050	
1 "	101 V 104 0	1032030	
5/8 "	401 X 104 A	1032040	

Kipphebel - Spannschieber Rocker Arm - Clamping



Art.-Nr. 1200050

Teile passend für **Variomatic/Rundtaktmaschine**
Parts suitable for **Variomatic/Round-stroke machine**



Art.-Nr. 1200051

Bezeichnung Designation	Ident - Nr. Ident - No.	Art.-Nr. Art.-No.	
Kipp-/Spannhebel tipping lever	112.411.110.0 / VC531585	1200050	
Spannschieber/Spannstößel Clamping spacer	112.411.111.0 / V531586	1200051	
Kurvenrolle/roller	D18 / d8E8 / B12mm	1200052	
Rollenbolzen/roller bolt	D8 / L34	1200053	